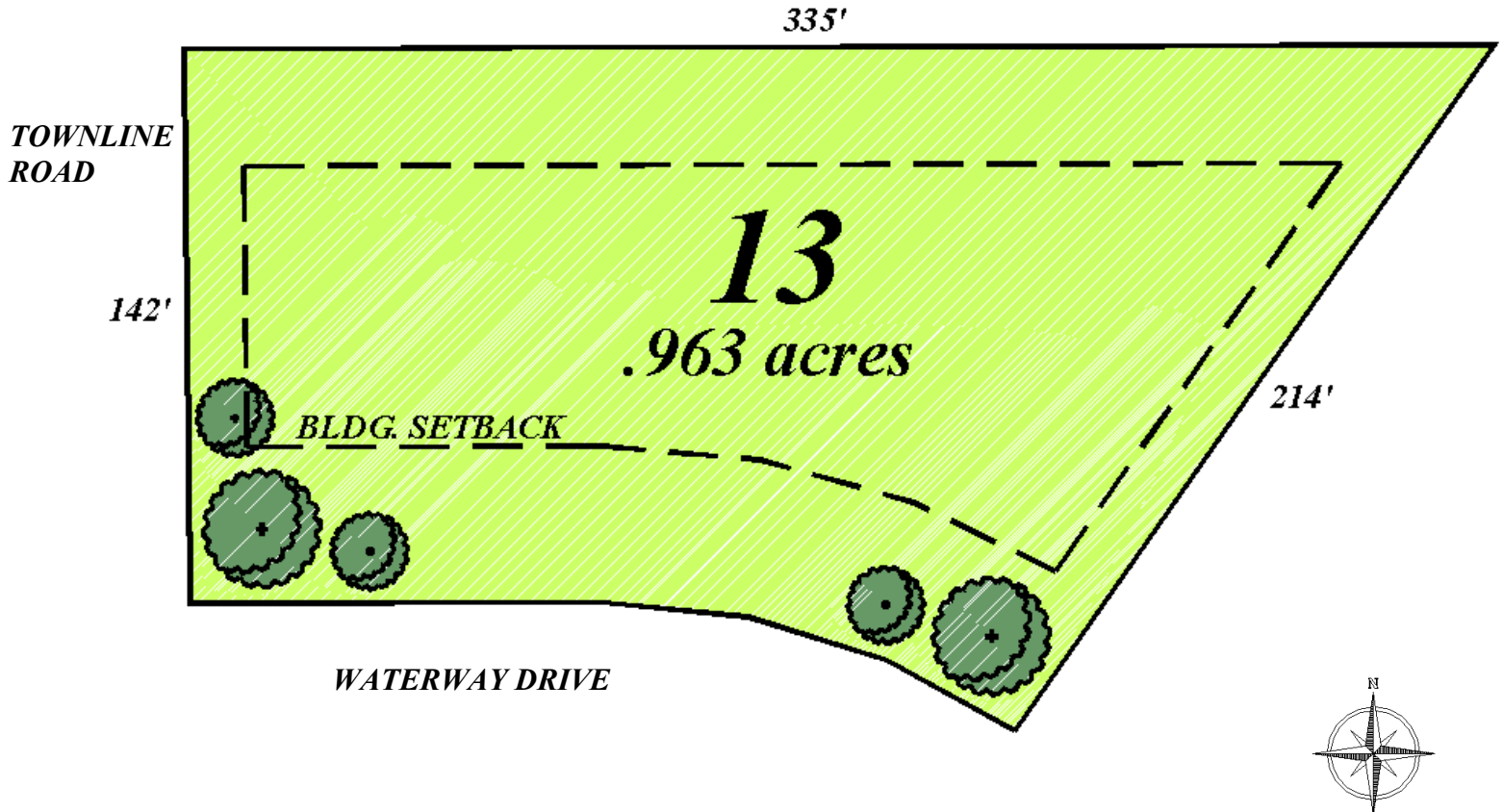


# Stillwater Estates

**LOT 13: \$53,900.00**



## HOME AND LOT PACKAGES AVAILABLE

Consultations available including layout, design services and detailed estimates of the cost of your new home construction project.

## SPACIOUS COUNTRY LOTS JUST WEST OF CITY

Natural Gas and Cable TV  
Restrictive Covenants  
Landscaped berms, Developer planted street trees  
Walk out and partially exposed basement lots  
Convenient to new 151 bypass and Hwy 41  
Fond du Lac School District  
Open to all builders

Offered by:



For more information please contact:

John Mikkelson - Mikkelson Builders - 262-241-8740